

Date: \_\_\_\_\_

Client: \_\_\_\_\_

No.tel: \_\_\_\_\_

Fax: \_\_\_\_\_

email: \_\_\_\_\_

Revêtement de mur: \_\_\_\_\_

Corniche finie: \_\_\_\_\_

Dimensions du bâtiment: \_\_\_\_\_ X \_\_\_\_\_  
portée du truss x longueur

Revêtement du toit: bardeaux  tôle  autre   
Si tôle, fourrure ( \_ X \_ ) @ \_\_\_\_\_ c/c

Code: agricole  commercial  résidentiel

Job: \_\_\_\_\_

Région: \_\_\_\_\_

Date prévue: \_\_\_\_\_



**DAVIAU & FRÈRES INC.**

FABRICANT DE STRUCTURES DE BOIS  
FERMES DE TOIT - POUTRELLES AJOURÉES  
RÉSIDENTIEL-COMMERCIAL-AGRICOLE

985 CH. MILTON, ST-VALÉRIEN, QC J0H 2B0

BUR: (450) 549-2695

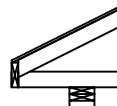
BUR: (800) 667-8393

FAX: (450) 549-2694

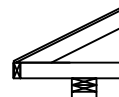
Note:

\_\_\_\_\_  
\_\_\_\_\_

fascia 2x6



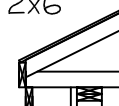
fascia 2x4



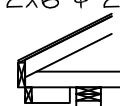
double fascia 2x4



double fascia 2x6

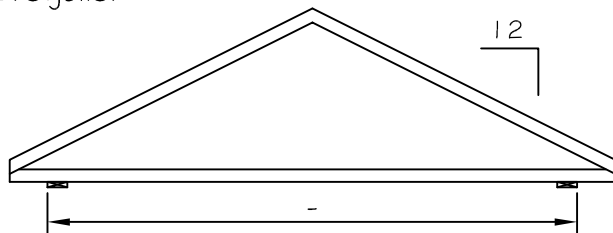


double fascia 2x6 & 2x4

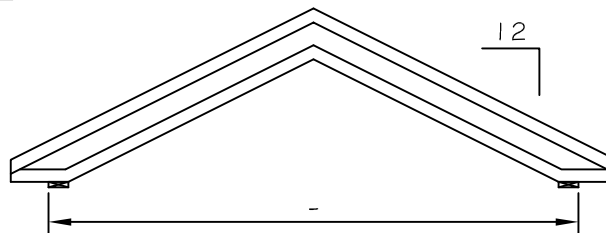


Choisir le ou les modèles:

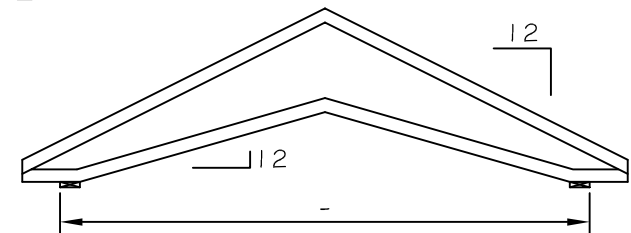
régulier



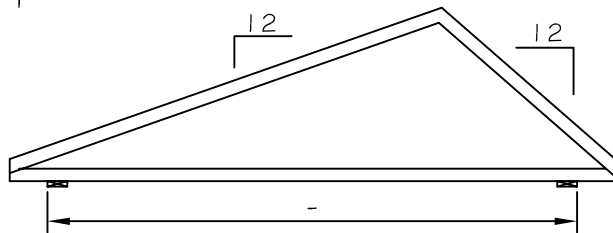
cathédral



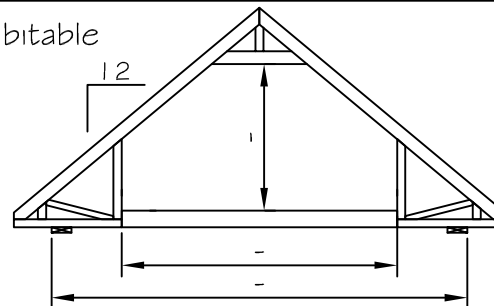
ciseau



pentes différentes



habitable



mono-pente

